

Muskegon County Environmental Coordinating Council



To advance the environmental well being of the Muskegon region by providing opportunities for collaboration, education, and stewardship.

What is the MCECC?

What we are not...

What we are...

A 501 C(3)

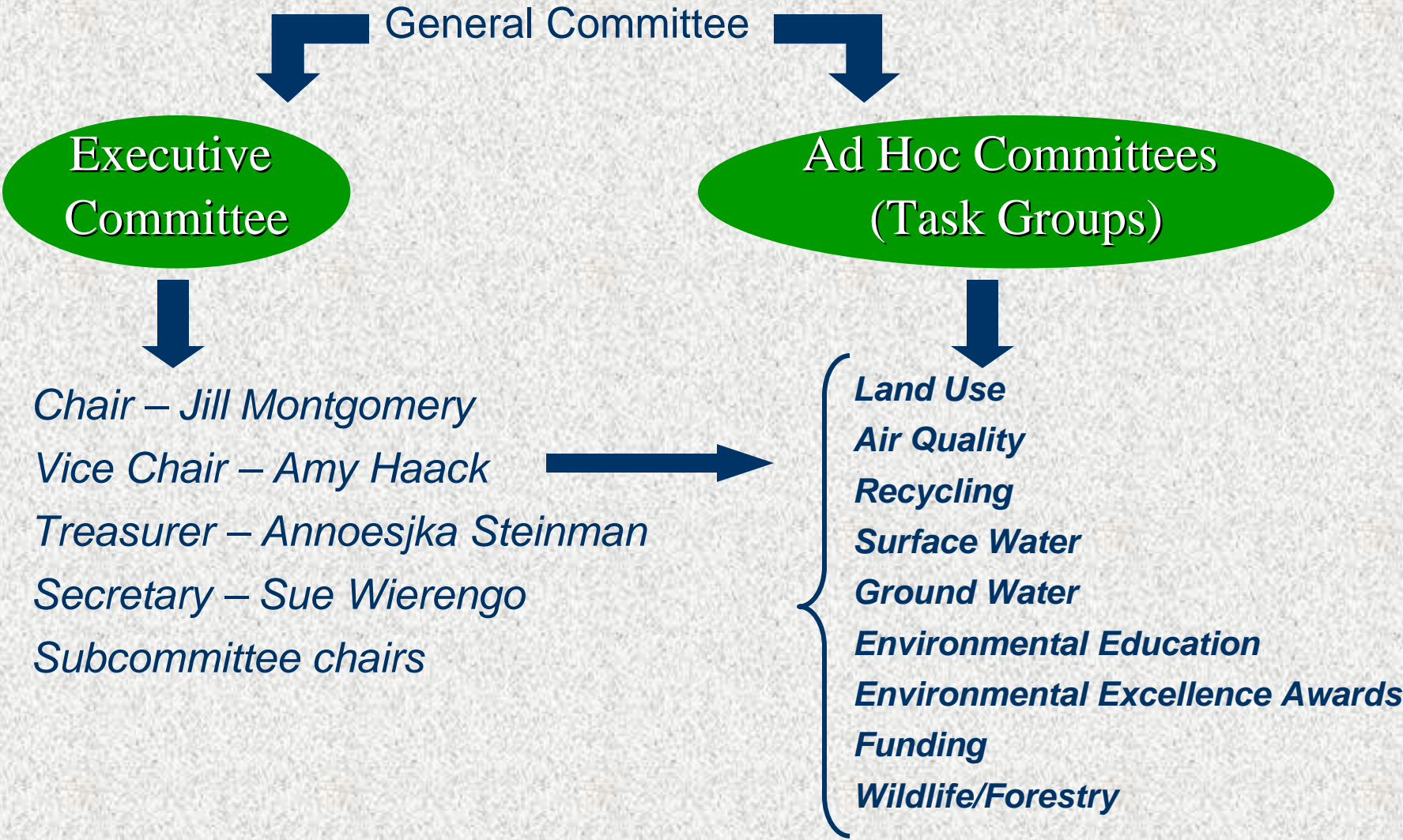
A collaborative organization

MCECC History

- **Founded in 1991**
- **Muskegon Economic Growth Alliance**
- **Reorganized in 1998 as a 501 c(3)**



MCECC Organization



MCECC Projects

Muskegon County Land Use Task Force

PROMOTING LAND USE
THAT ENHANCES COMMUNITY
CHARACTER, ENVIRONMENTAL
QUALITY, STEWARDSHIP AND
ECONOMIC VIABILITY THROUGH
EDUCATION, PARTNERSHIPS,
AND TECHNICAL ASSISTANCE



**MUSKEGON AREA
ENVIRONMENTAL
EXCELLENCE
AWARDS**

Box 567, Muskegon, Michigan 49443-0567

Environmental Directory

Stylized logo

MDEQ
MICHIGAN DEPARTMENT
OF ENVIRONMENTAL QUALITY

KEY CONTACTS
FOR
MUSKEGON COUNTY

Stylized logo

PREPARED BY:
MUSKEGON COUNTY
ENVIRONMENTAL
COORDINATING COUNCIL

**RECYCLE
MUSKEGON!**

A Guide to
Recycling Opportunities
in Muskegon County

A project of the Muskegon County
Environmental Coordinating Council

**DO YOU HAVE
YOURS YET?**

Get your copy by calling
231.557.2915
or contacting by email at
liz@mcecc.org or skyprice@iserv.net

The MEGA Muskegon County 2000
Environmental Coordinating Council
presents

**POLLUTION
PREVENTION
CONFERENCE**

- Highlighting Local Success Stories in Pollution Prevention
- Disseminating Information about Resources for Area Business and Industry
- Providing a Forum for Discussion of Clean Technologies, Waste Minimization, Etc.
- Focusing on the Benefits of Cooperative Relationships between Environmental, Governmental and Business Groups

**March 31, 1993
8:00 a.m. - 12 NOON**
Registration at 7:30 a.m.

Best Western Park Plaza
2967 Henry Street, Muskegon

Co-Sponsored by
Scaled Power Hy-Lift Division
Du Pont Montague Works
Lake Michigan Federation

Featuring
**OFFICE OF
WASTE REDUCTION SERVICES**
Environmental Services Division

Michigan Department of Commerce & Natural Resources
The Environmental Services Division operates under a partnership
between the Departments of Commerce and Natural Resources to
assist both economic development and the environment by
providing information, training, and technical assistance to Michigan
businesses. This joint venture is a customer-oriented services division,
which is completely non-regulatory. The division offers services in:
Waste Reduction - Recycling/Promote - Site Remediation and Redevelopment
Air Quality Small Business Assistance - Education/Outreach

No admission charge - Please reserve space by calling
(616) 722-5116

Recycling Surveys



MCECC Projects



VALERIE BYRNES
PROGRAM DIRECTOR
MCECC CARE PROGRAM

PO BOX 1512
MUSKEGON, MI 49440
616-638-5521
VABYRNES@CHARTER.NET

WWW.MCECC.ORG
WWW.EPA.GOV/CARE



Your Environment

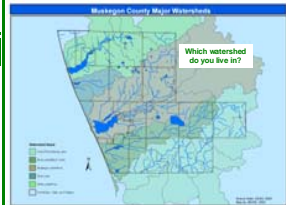
A collaborative information resource for the Muskegon County Community
Brought to you by the Muskegon County Environmental Coordinating Council

Watersheds 101 Source: EPA, 2003; Muskegon Conservation District

A watershed is an area of land that catches rain or snow and drains to a specific marsh, stream, river, lake or groundwater supply. Muskegon County can be subdivided into a number of smaller watersheds or sub-basins. These sub-basins catch rain or snow, feed into small rivers, lakes, and streams, emptying into one of the major watershed systems that drains into Lake Michigan.

Increases in population, land development, and economic activity increase demand for water, waste disposal, and natural resources. These activities increase the amount of pollution entering our waters and alter natural habitats. Without appropriate management, human impact on watersheds can seriously harm the health of a watershed and the water it supplies for drinking and recreational purposes.

- What you can do to protect your watershed**
- Use commercial car washes to clean automobiles.
 - When landscaping, buy plants that use less water and require less fertilizer.
 - Use only as much pesticide and fertilizer as your plants need.
 - Plant native plant buffers along streams, rivers, lakes and ponds.
 - Maintain your vehicle to prevent drips and leaks.
 - Dispose of all chemical and biological wastes properly.
 - Reuse your lawn waste by mulching or composting.
 - Encourage the planting of shade trees along rivers and streams to reduce **thermal pollution**, improving habitat for fish and wildlife.
 - Get involved by contacting your area watershed stewardship group listed on page two of this issue.



www.mcecc.org

INSIDE THIS ISSUE

Watershed Stewardship Info 2

New Recycling Directory Info 2

About Cryptosporidium 2

Environmental Excellence Nomination Announcement 3

MCECC Subcommittee Activities 3

Environmental Excellence Nomination Form 4

Paper or Plastic? 5

Clean Corporate Citizens AD/AC Plastics 6

Terms in bold text that are **defined** in the terminology section on page 2 of this issue.

Good Web Sites Good Information

Watershed EPA: epa.gov/watershed/

Center for Watershed Protection: www.ch2m.com/

Watershed Division: www.epa.gov/watershed/

USEPA: www.epa.gov/

Recycle Bin Recycling: www.epa.gov/

2006 Scrap & Abandoned Tire Collections in Muskegon County

Muskegon County residents should be prepared to show identification and/or proof of County residency at any collection sites.

- 1 Former Wastewater Treatment Site**
2000 Helton Whitehall Rd.
Wednesday, May 24 - 9am to 5pm
Saturday, May 27 - 9am to 5pm
- 2 Cedar Creek Twp. Hall**
6556 Sweetser Rd.
Saturday, May 20 - 9am to 3pm
- 3 Egelston Twp. Hall**
5428 E. Apple Ave.
Friday, May 19 - 9am to 5pm
Saturday, May 20 - 9am to 5pm
- 4 Englewood Farms**
5210 Airline Rd.
Thursday, May 4 - 9am to 6pm
Friday, May 5 - 9am to 6pm
Saturday, May 6 - 9am to 2pm
- 5 1 1/2 mile north of Apple Ave. on Swanson**
(1 mile West of Moorland)
Saturday, Sept 23 - 9am to 4pm
Sunday, Sept 24 - 10am to 2pm
FALL DATE!

Abandoned Tire Hazards
Michigan generates nine million scrap tires annually posing health and safety hazards such as breeding disease-carrying mosquitoes and rodents. Stockpiled scrap tires are also at risk for catching fire from arson, accident, or lightning creating toxic fumes and runoff that can pollute nearby rivers and streams.

CUSTOMER CHARGES

Passenger Car Tires
Without Rims - \$2.00 each
With Rims - \$2.50 each

Semi Tires
Without Rims - \$7.50
With Rims - \$10.00

Tractor Tires - \$25.00 each
Loader tires will NOT be accepted at any site

This program is brought to you through a cooperative effort between the County of Muskegon & local municipalities. Please contact your township, city, village office, or the Muskegon County Health Department at 231-724-1293 for information on a collection nearest you.

Organizational Priorities

- Organization Awareness
- Streamlining
- Project prioritization and goal setting
- Expanding Membership
- Member and Community Education
- Agency and Community Collaboration
- Funding

Muskegon County Environmental Coordinating Council



What's on the horizon?

Oversee the update of the recycling directory

Begin an Adopt a Bike Trail program

Become more involved in regional sustainability projects

Others?



Jill Montgomery, Chair
231-724-1293
montgomeryji@co.muskegon.mi.us

Muskegon County Environmental Coordinating Council

